

„gift bag stroller“



eBook from stephankie-dreams.com



sewing instructions and sewing pattern

Copyright for the "gift bag stroller" by Stephanie Müller, Stephankie-Dreams, July 2024.
Items sewn from this pattern may be sold without quantity restrictions, provided that the author of the pattern ("gift bag stroller" by Stephankie-Dreams) is credited in the product description. Mass production, publication of the eBook, or any parts thereof is expressly prohibited.

contens

important links	3
who is behind Stephankie-Dreams	4
gift bag stroller	5
sewing terms	6
instructions for printing	8
required materials	10
material consumption	11
sewing instruction gift bag stroller	12
sewing pattern	35

Stephankie-Dreams

No liability is assumed for any errors in the instructions

important links

Thank you for choosing an eBook from *Stephankie-Dreams*.

Stephankie-Dreams eBooks contain many pictures and are described in great detail, so even beginners can achieve beautiful sewing results with these instructions.

Every idea that comes to my mind is lovingly developed by hand, thoroughly tested, and repeatedly sewn until everything fits perfectly.

I am happy to answer your wishes and questions about sewing at

info@stephankie-dreams.de

You can find all the news on Facebook ([Stephankie-Dreams](#))
and on Instagram ([#stephankiedreamsde](#))

Stephankie-Dreams

No liability is assumed for any errors in the instructions

Who is behind Stephankie-Dreams



Many years ago, creating patterns was not even a consideration. I've always enjoyed being creative. Slowly but surely, I continued to develop my skills. During my first training, I came into contact with a sewing machine for the first time and found pleasure in using it. My first attempts were homemade carnival costumes for my two children. They had such unique requests that I simply had to take matters into my own hands. But it was only years later, when I held a piece of jersey fabric in my hands, that I fell head over heels in love with this material. Jersey is so versatile and so comfortable to wear.

So, I began sewing everyday clothing for the children in my family. I enjoyed it so much that I started to build my company, Stephankie-Dreams, to sell handcrafted products. With every piece I produced, I learned more and more, and new ideas for products kept popping into my head, which I put on paper and brought to life. Eventually, I wanted to share my experiences and ideas with others and began creating my own patterns.

With eBooks from Stephankie-Dreams, I now want to reach many people who want to learn the craft of sewing. I hope that it sparks a passion for sewing in some, as the joy of every handmade piece is indescribable.

So now, I wish you all a lot of fun and success in sewing.

Yours, Stephanie

Stephankie-Dreams

No liability is assumed for any errors in the instructions

gift bag stroller

When a child is born, gifts are often given to welcome the new arrival. This raises the question of how best to wrap the gift. With the stroller gift bag, the gift can be packaged in an original way. Later, the bag can be used by the child. It provides a place for a stuffed animal or a small doll to be taken everywhere. The bag is approximately 14,57 in length. The height without the roof is about 5,51 in.

The gift bag is sewn from cotton fabrics.

Sewn pieces made from this pattern may be sold without any quantity restrictions. The author of the pattern ('gift bag stroller' by Stephankie-Dreams) must be credited in the description text. Mass production, publication of the eBook, or sharing any parts of it is expressly prohibited.



Stephankie-Dreams

No liability is assumed for any errors in the instructions

sewing terms

seam allowance = When cutting pattern pieces, a seam allowance of approximately 3/8 in is often added. This ensures that the garment will not be tighter than it should be when sewn.

trim seam allowance = This refers to trimming the seam allowance after sewing. This makes the seams flatter.

to clip = For corners or curves, small notches are made in the seam allowance after sewing, so that the seam lies flat and the corner can be properly pushed out after turning.

seam lock = To prevent the seam from coming undone, a few stitches must be sewn forward and backward at the beginning and end of each seam.

right fabric side = The right side of the fabric is the more attractive side and should be used as the outer side.

left fabric side = The left side should be used as the inner fabric side. It is the less attractive side of the fabric.

grainline = This refers to the fabric grainline that must be observed when cutting pattern pieces.

presser foot width = The fabric is guided along the edge of the presser foot during sewing.

apply = Sew on appliqués using a zigzag stitch (stitch width 3.5 and stitch length 0.9). Use thread that matches each appliqué's color.

edgestitch = Here, sew close to the edge of the fabric.

running stitch = Here, sew over an edge to additionally stabilize it.

curl = The creation of gathers.

right sides together = Here, two pattern pieces are placed together with the right sides facing each other. The less attractive side is therefore on the outside.

Stephankie-Dreams

No liability is assumed for any errors in the instructions

finish = Here, a zigzag stitch is used to sew over the fabric edges to prevent fraying and/or to sew them together at the same time.

fold = The pattern is placed once with the writing facing up on the fabric, and once mirrored along the fold edge on the fabric.

Please read the instructions carefully before you start sewing, as this will answer most questions in advance.

A seam allowance of 3/8 in is already included in the pattern.

Unless otherwise stated, always sew with a presser foot width.

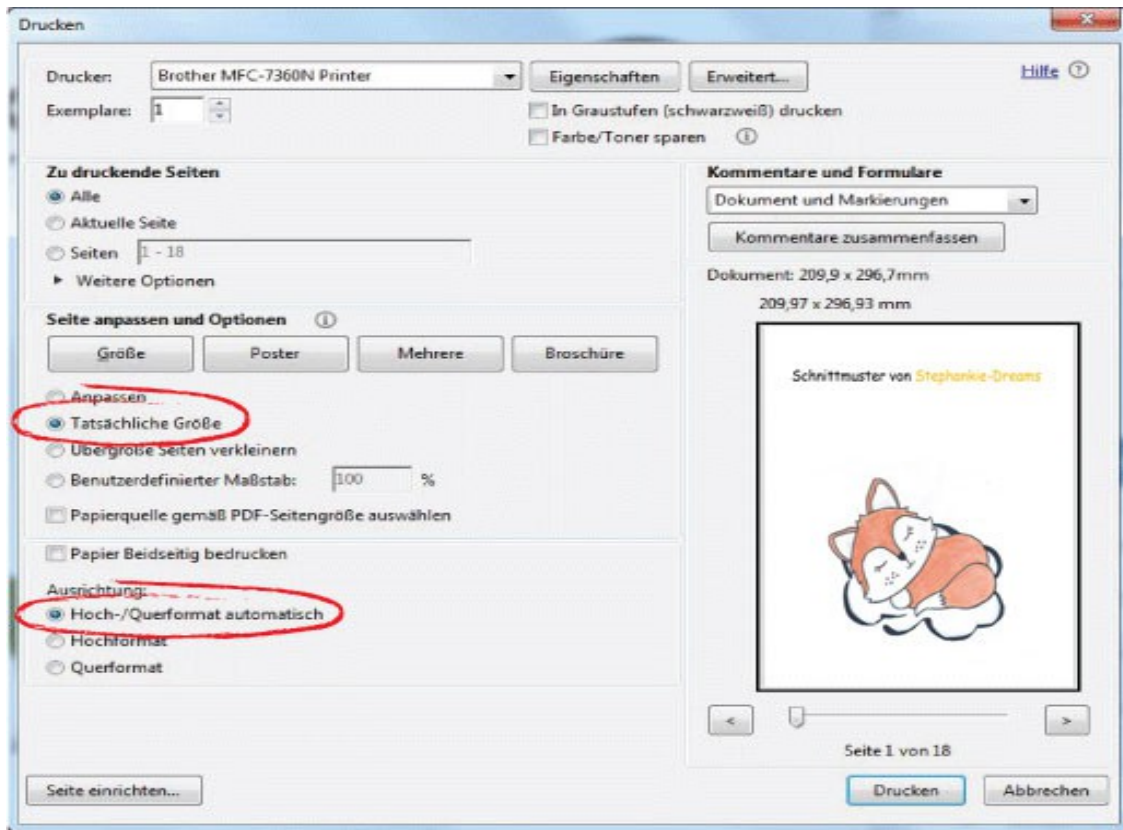
Stephankie-Dreams

No liability is assumed for any errors in the instructions

instructions for printing

tip:

Print only the pattern in black and white to save costs and be environmentally friendly. The instructions are easy to read on screen.



The following print settings must be configured:

Pages to print:

Select the Pages setting and enter the specific page numbers you need in the designated field.

Size:

Choose Actual Size.

Orientation:

Select Automatic Portrait/Landscape.

Stephankie-Dreams

No liability is assumed for any errors in the instructions

required materials



- sewing machine
- needle universal
- iron
- scissors, pins or fabric clips, pen
- Kam Snap pliers
- pattern
- thread in various colors, matching the selected fabrics

Stephankie-Dreams

No liability is assumed for any errors in the instructions

material consumption

material	consumption
fabric for outside	ca. 32 x 32 in
fabric for inside	ca. 42 x 22 in
fabric for wheels outside	ca. 20 x 10 in
fabric for wheels inside	ca. 6 x 6 in
batting 0,39 in large	ca. 14 x 6 in
batting iron-on	ca. 30 x 18 in
fusible interfacing Vliesline H250	ca. 11 x 9 in
Decovil light	ca. 9 x 9 in
Kam Snaps	6 piece
lace	Length 6,5 in 2x, length 7,09 in 1x
plastic (Polystyrol 0,04 in) or cardboard	9,65 x 5,9 in

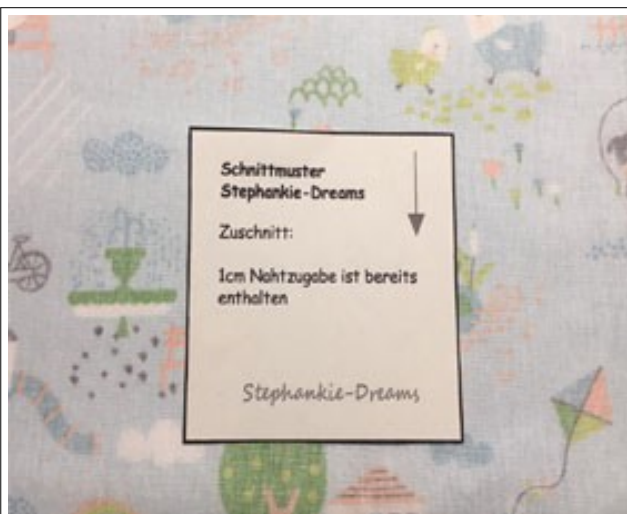
Stephankie-Dreams

No liability is assumed for any errors in the instructions

sewing instructions gift bag



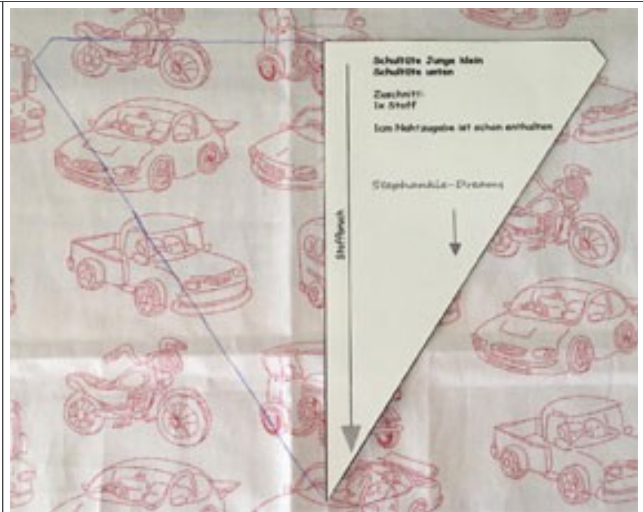
First, cut out all required pattern pieces from fabric, batting, decovil and fusible interfacing. Then, press all fabric pieces and iron fusible interfacing and decovil onto the respective pieces.



The pattern is placed with the writing facing up on the left side of the fabric. Mirror image means the writing is on the fabric side. Here too, it is placed on the left side of the fabric.

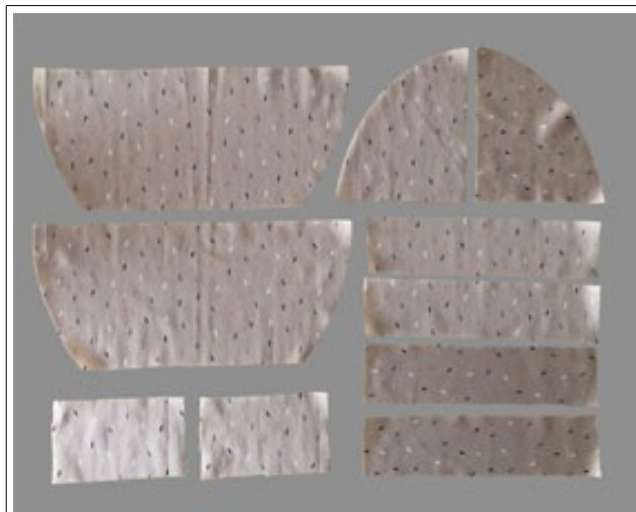
Stephankie-Dreams

No liability is assumed for any errors in the instructions

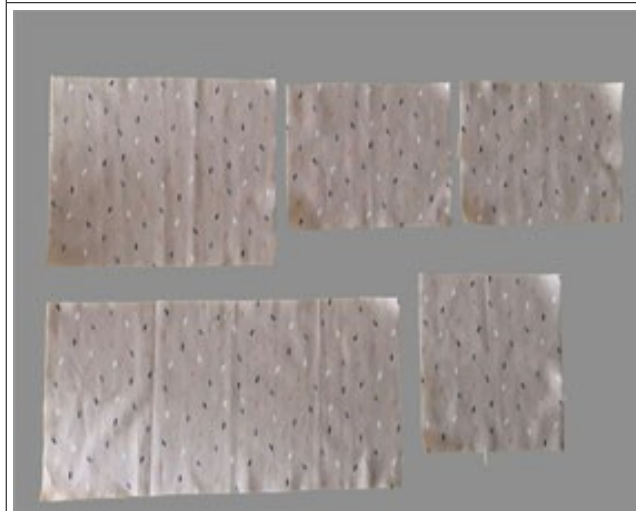


fold = The pattern piece is placed once with the writing facing up on the fabric and once mirrored along the fold edge on the fabric. This will result in a connected fabric piece.

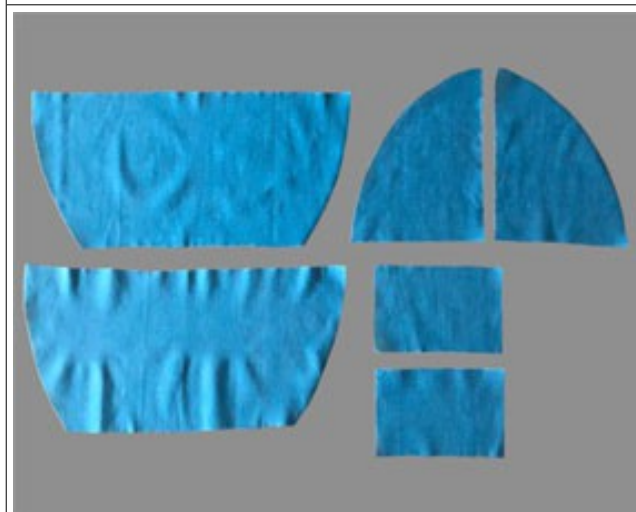
You now have the following pattern pieces :



from the fabric for outside:
side 2x
roof 2x, 1x of which opposite
side pocket 2x
handle 4x






bottom 1x
upper border 1x
lower border 1x
blanket 2x fabric, 1x fusible interfacing



from the fabric for inside:
side 2x
roof 2x, 1x of which opposite
side pocket 2x

Stephankie-Dreams

No liability is assumed for any errors in the instructions

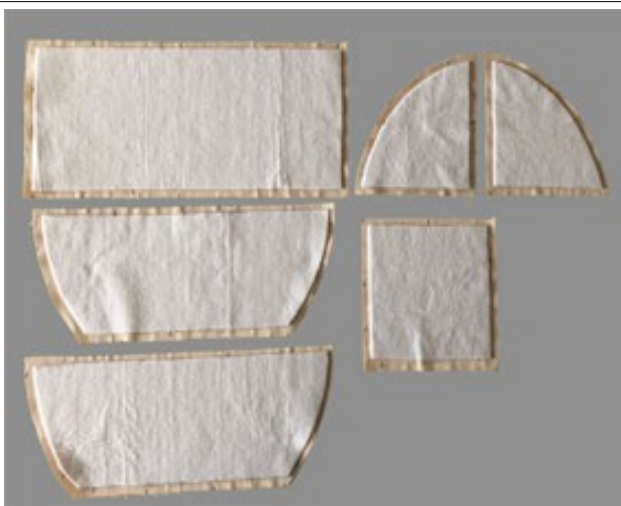
	<p>bottom 1x upper border 1x lower border 1x ground for reinforcement 2x</p>
	<p>from the fabric for wheels outside: wheel outside 8x fabric, 4x decovil from the fabric for wheels inside: wheel inside 4x fabric, 4x fusible interfacing</p>
	<p>from the batting iron-on: side 2x roof 2x, 1x of which opposite upper border 1x lower border 1x</p>

Stephankie-Dreams

No liability is assumed for any errors in the instructions

	<p>from the batting 0,39 in large: handle 2x</p>
	<p>ground for reinforcement 1x out of plastic or cardboard</p>

make from gift bag



First, iron the batting onto the wrong side of the corresponding outer fabric pieces. Leave 3/8 in seam allowance around the edges of the roof, sides, upper, and lower borders.



Iron interfacing onto one blanket piece and the inner wheels.



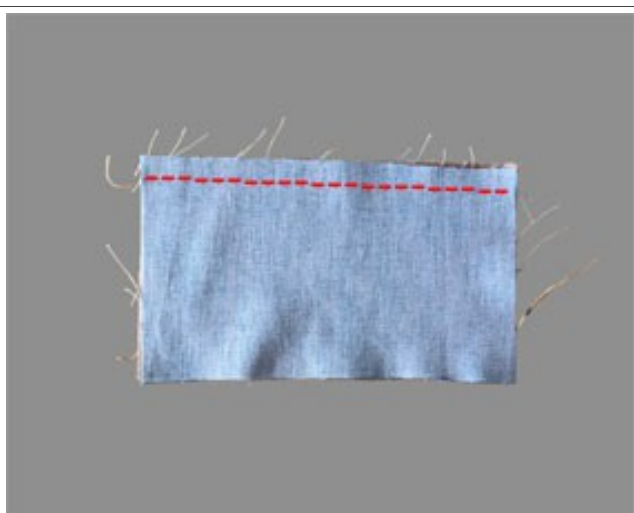
Iron Decovil onto 4 of the outer wheels.



Draw the position of the side pocket and the wheels onto the side panels using a fabric marker that can be removed later. The exact positions are included in the pattern.

Stephankie-Dreams

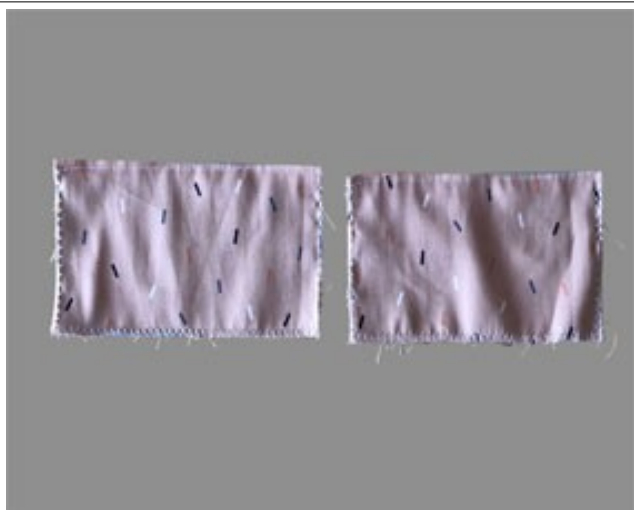
No liability is assumed for any errors in the instructions



Place one outer fabric side pocket and one inner fabric side pocket right sides together. Sew them together along the marked line.



Turn the pocket so that both fabrics are wrong sides together. Sew along the upper edge with a narrow edge stitch. To prevent any shifting, sew the sides and the bottom edge together with a narrow zigzag stitch.



Sew the second pocket in the same way.



Place the pocket on the previously marked position of a side panel. Sew the sides and the bottom edge of the pocket with an applique stitch. Leave the top of the pocket open.



Sew the second pocket onto the second side panel in the same way.



Place the bottom piece along the lower edge of one side panel, with the fabrics right sides together. Sew them together along the marked line, leaving $\frac{3}{8}$ in free on both the left and right sides. This is important to ensure that the other sides can be sewn on easily later.



The side panel is attached to the bottom.



Place the second side panel opposite the bottom panel, right sides together. Sew them together along the marked line. Leave $\frac{3}{8}$ in free on both sides again.



The bottom is now attached to both side panels.



Sew the inner wheel onto the right side of the outer wheel using an appliqué stitch. Use the wheel that has been reinforced with Decovil for this.



Place the corresponding wheel that was not reinforced with Decovil on top of the wheel you just made, right sides together.



Sew the two wheels together around the edge using an appliqué stitch.



Sew the other 3 wheels together in the same way.



Place each wheel on the side panel at the marked position, then sew the wheels securely with an appliqué stitch. Note that only the upper wheel, where the marking is, will be sewn on.



When you fold over the side panel, the wheel is attached at the top and hangs down towards the bottom.



Sew the other two wheels onto the other side panel in the same manner.



Sew the lace to the roof with a zigzag stitch close to the edge, as shown in the picture.



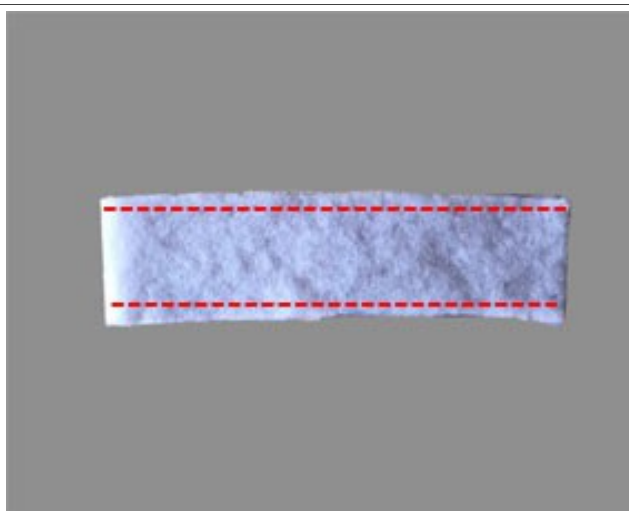
Place the roof piece onto the side panel. Both fabrics should be right sides together. Sew both along the marking.



The side panel is attached to the roof.



Sew the other roof to the other side panel in the same way.



Lege two handle pieces right sides together. Then place the batting on top of the handle. Sew everything together along the marking.



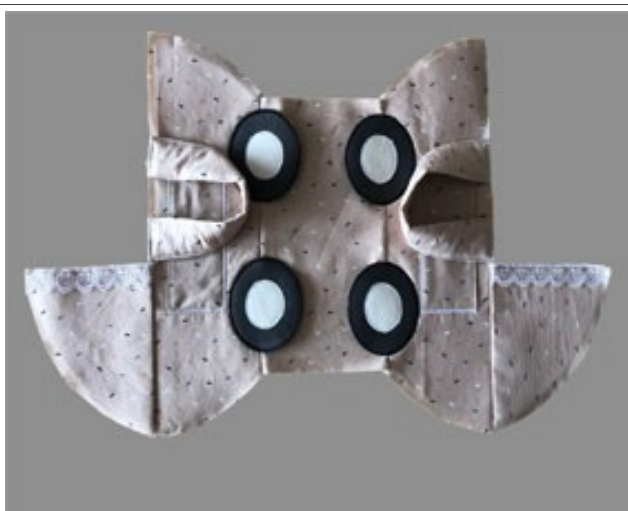
Turn the handle inside out. Then sew closely over the seams you just made.



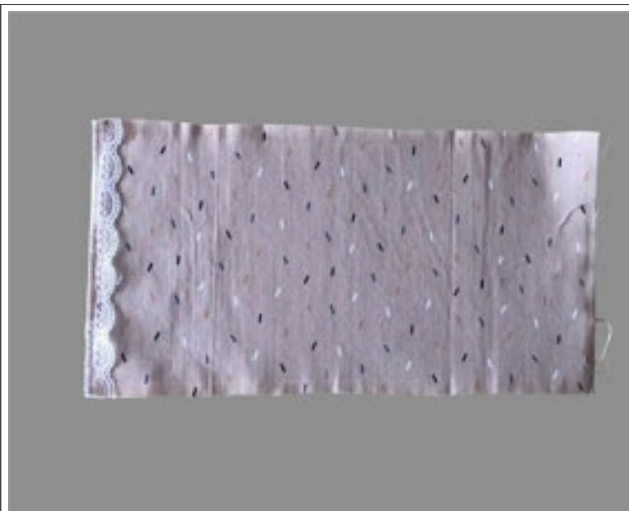
Sew the second handle together in the same way.



Place one end of the handle directly at the end of the roof part. Position the other end of the handle 1,57 in from the first end of the handle. Sew the handle securely to the side part with a zigzag stitch close to the edge.



Sew the second handle on the other side in the same manner.



Sew the lace to the upper border with a zigzag stitch close to the edge.



Align the upper border with the side where there is no lace, against the bottom. Both fabrics should be right sides together. Sew both pieces together along the marking. Ensure that there is a $\frac{3}{8}$ in seam allowance left on both the left and right sides.



Align the side of the border with the side of the stroller and the roof. Sew both together along the marking. Leave a $\frac{3}{8}$ in seam allowance at the lower end, and sew up to the end at the upper end.



Then align the other side of the border with the side of the stroller and the roof. Sew both together along the marking.



Place the lower edge of the bottom against the lower border. Both fabrics should be right sides together. Sew both together along the marking. Leave a $\frac{3}{8}$ in seam allowance on both the left and right sides again.



Then align the side of the lower border with the side of the stroller. Sew both together along the marking. Leave a $\frac{3}{8}$ in seam allowance at the lower end again, and sew up to the end at the upper end.



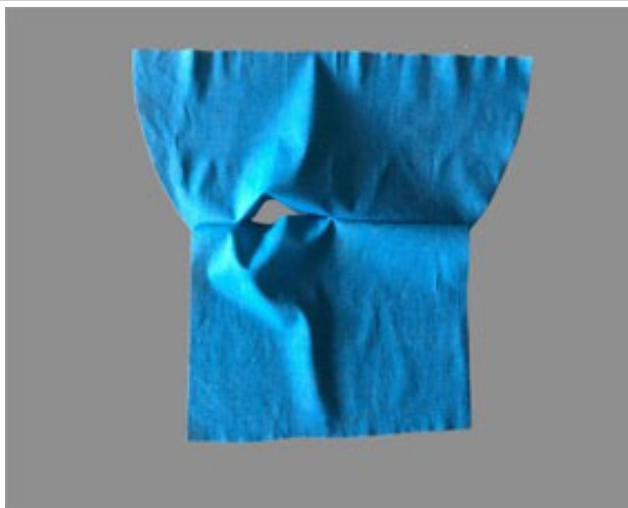
Next, place the other side of the lower border against the opposite side of the stroller. Sew both together along the marking.



Turn the bag inside out so that you see the right side of the fabric on the outside. The outer bag is now finished.



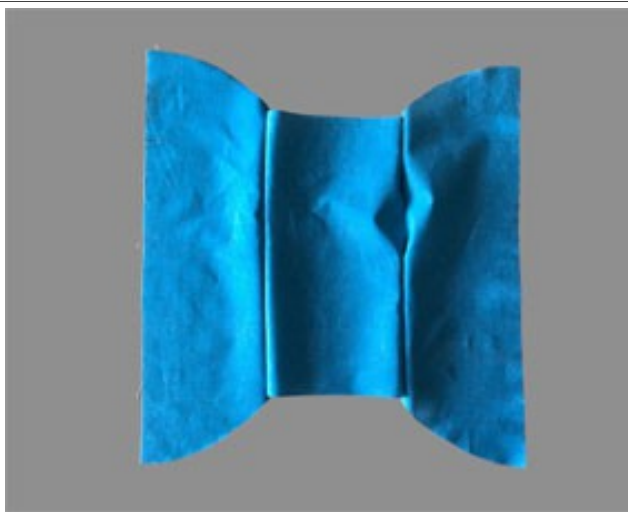
Now, the inner bag is needed. Start by placing the bottom and one side panel right sides together. Sew both together along the marking, leaving an opening for turning. Also, leave a 3/8 in seam allowance on both the left and right sides.



The side panel is connected to the bottom. There is an opening between the two parts for turning.



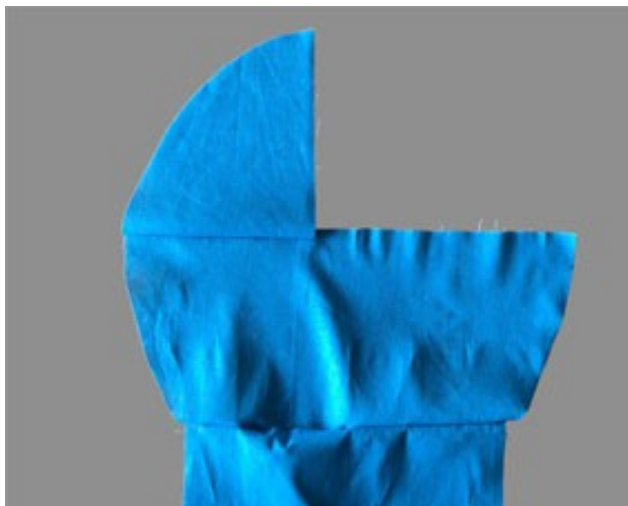
Place the second side panel on the opposite side of the bottom. Both fabrics should be right sides together. Sew both together along the marking, leaving a 3/8 in seam allowance on both the left and right sides.



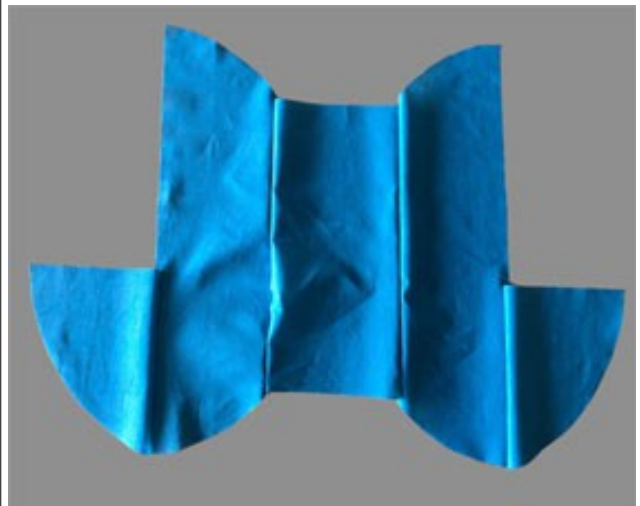
The bottom is now connected to both side panels.



Place the roof piece along the upper edge of the side panel. Both fabrics should be right sides together. Sew both together along the marking.



The roof is now connected to the side panel.



Sew the second roof piece to the other side panel in the same manner.



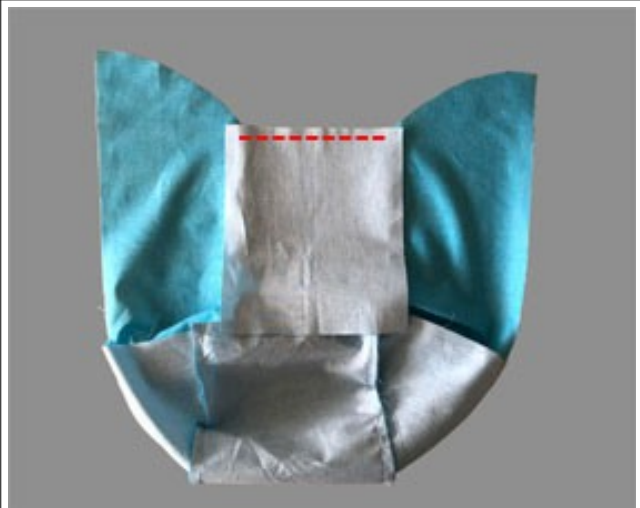
Place the upper border against the top edge of the bottom. Both fabrics should be right sides together. Sew both together along the marking, leaving a $\frac{3}{8}$ in seam allowance on both the left and right sides.



Align the side of the upper border with the side of the stroller and the roof. Sew both together along the marking. Leave a $\frac{3}{8}$ in seam allowance at the lower end, and sew up to the end at the upper end.



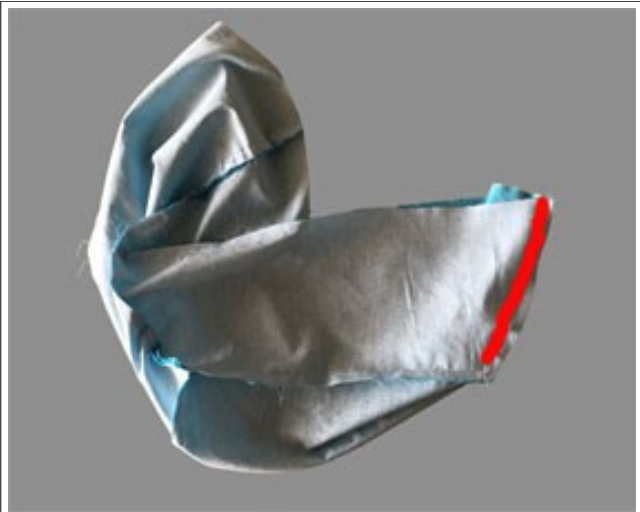
Then place the other side of the upper border against the side of the stroller and the roof. Sew both together along the marking.



Place the lower border at the bottom end of the bottom piece. Both fabrics should be right sides together. Sew both together along the marking, leaving a $\frac{3}{8}$ in seam allowance on both the left and right sides.



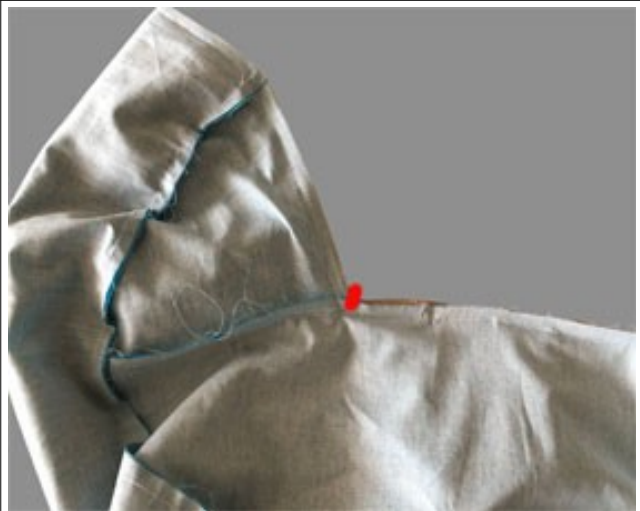
Next, place the side of the lower border against the side of the stroller. Sew both together along the marking. Leave a 3/8 in seam allowance at the lower end again, and sew up to the end at the upper end.



Then place the other side of the lower border against the other side of the stroller. Sew both together along the marking.



Pull the inner bag over the outer bag now. Both fabrics should be right sides together. Sew around the edge, along the marking.



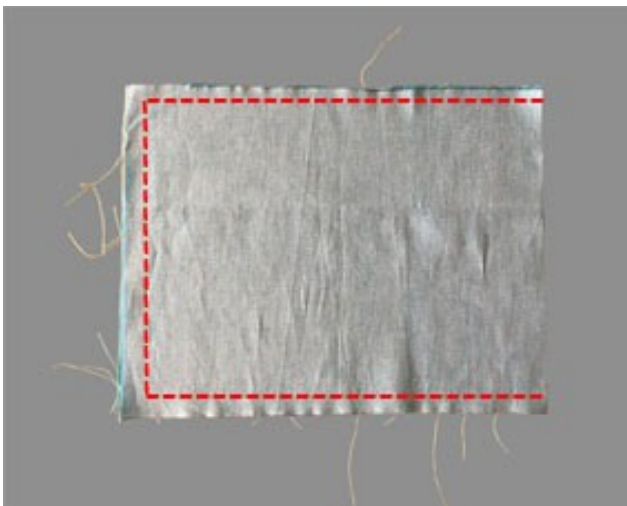
Before turning the bag inside out, cut the fabric at the marking on both sides, just before the seam.



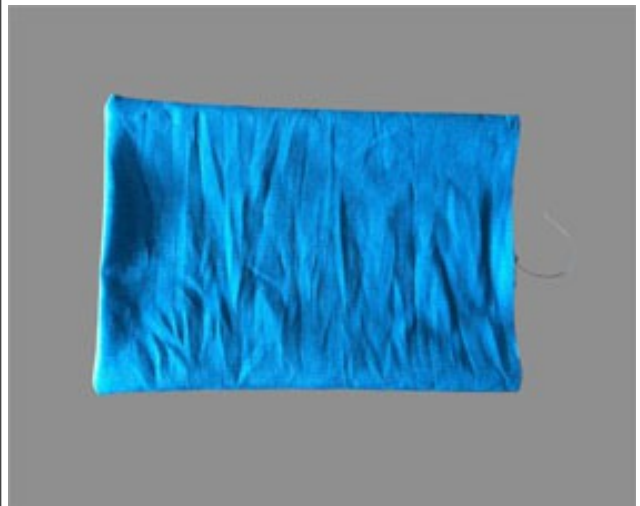
Turn everything inside out through the opening. Fold the fabric of the opening $\frac{3}{8}$ in inward and then sew the opening closed with a narrow seam.



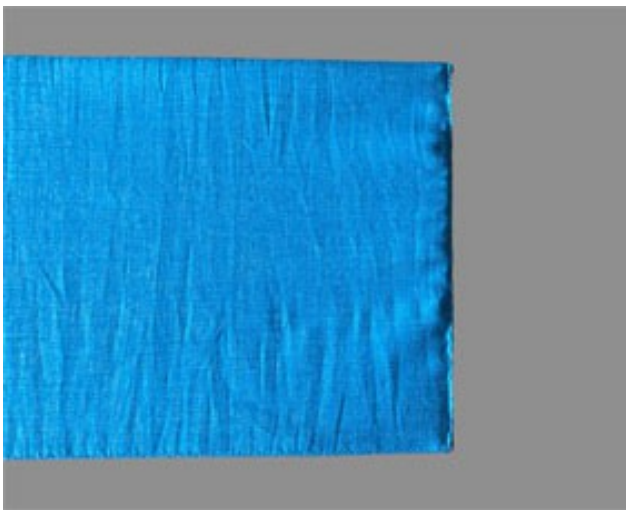
Insert the inner fabric into the bag.



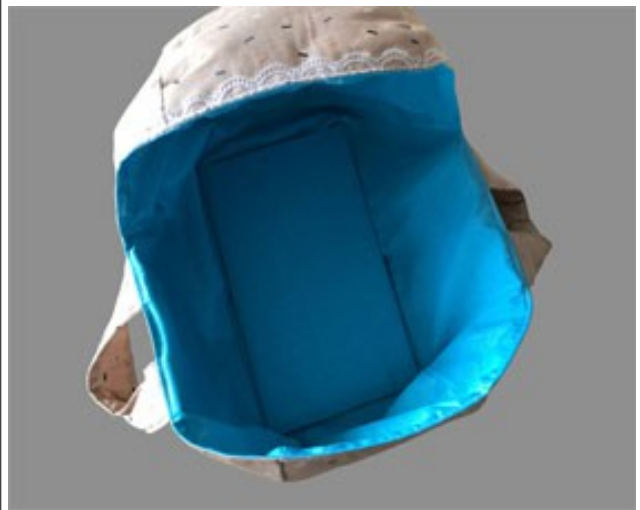
Now the reinforcement for the bottom will be sewn. Place the two fabric pieces for the reinforcement right sides together. Sew both together along the marking.



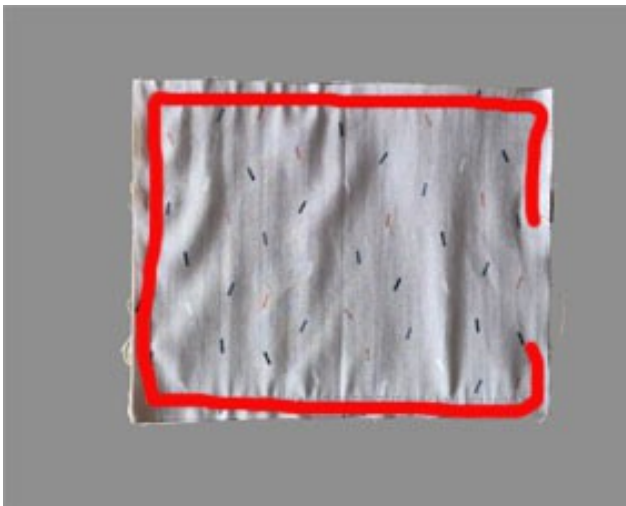
Turn the whole thing inside out. One side is open. Now insert the plastic sheet or cardboard.



Then fold the fabric of the opening 3/8 in inward and close the opening by hand.



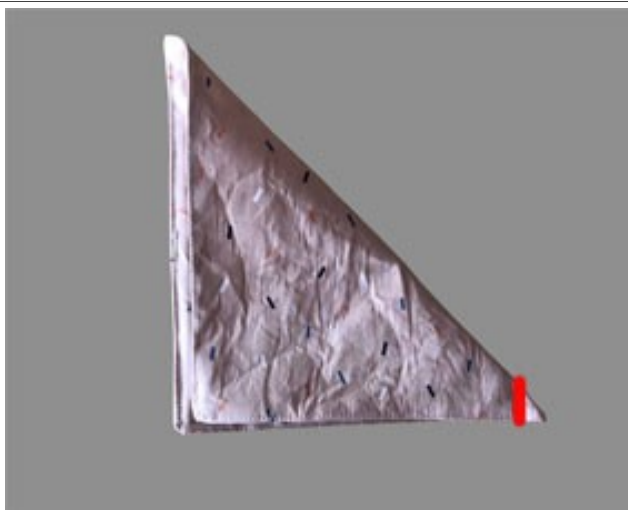
Insert the reinforced bottom into the bag.



Now the blanket is needed. Place the two pattern pieces for the blanket right sides together. Sew both together along the marking, leaving an opening for turning on one side.



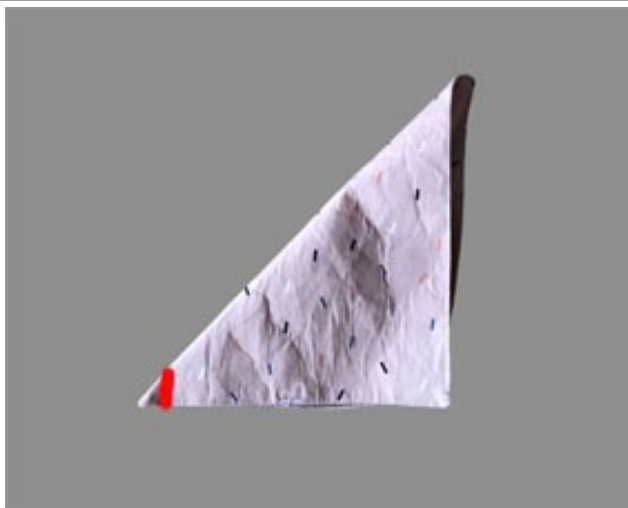
Turn the blanket inside out through the opening. Fold the fabric of the opening 3/8 in inward. Then sew closely over the seam just made, ensuring to close the opening as you sew.



Now the bottom corners of the blanket will be sewn. Place the upper corner of the blanket over the lower corner, creating a triangle as seen in the picture. Measure $\frac{3}{8}$ in from the corner and sew over it.



A tip has now formed at the corner of the blanket.



Repeat this step with the other bottom corner of the blanket.



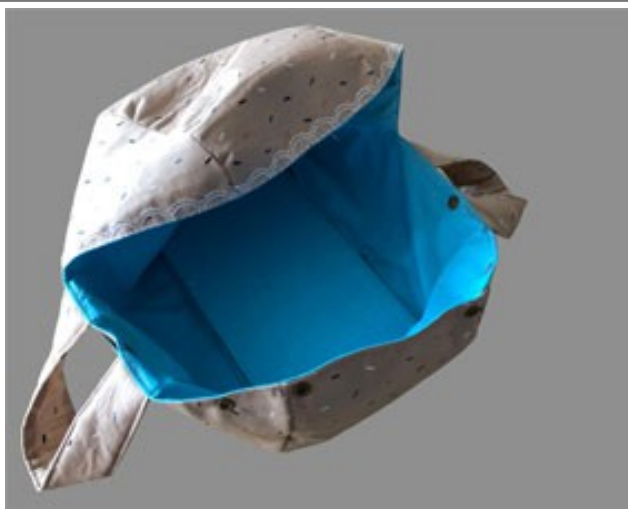
The blanket now has two corners at the bottom. You can now trim the protruding corners back to just before the seam.



Fold the bottom edge of the blanket over.



Attach the Kam Snaps to the blanket. The exact positions are indicated in the pattern.



Then attach the Kam Snaps to the bag. Hold the blanket against the bag and mark the exact positions for the Kam Snaps.



Attach the blanket to the bag.



If you've made it this far, you can be happy. Your gift bag is finished. And now it can be filled with the gift.



And later, the bag can be used for a stuffed animal or a doll.

Stephankie-Dreams

No liability is assumed for any errors in the instructions

Sewing Pattern "gift bag stroller"

Control square

2 in x 2 in

pattern pieces for gift bag



= grainline

fold

gift bag stroller
upper border

cut 1x fabric on fold for outside
cut 1x fabric on fold for inside

3/8 in seam allowance included



Stephankie-Dreams

gift bag stroller
bottom

cut 1x fabric for outside
cut 1x fabric for inside

3/8 in seam allowance included



Stephankie-Dreams

gift bag stroller
ground for reinforcement

cut 2x fabric for inside

3/8 in seam allowance included



Stephankie-Dreams

gift bag stroller
lower border

cut 1x fabric for outside
cut 1x fabric for inside

3/8 in seam allowance included



Stephankie-Dreams

gift bag stroller
side pocket

cut 2x fabric for outside
cut 2x fabric for inside

3/8 in seam allowance included



Stephankie-Dreams



**gift bag stroller
blanket**

cut 2x fabric for outside
cut 1x fusible interfacing

3/8 in seam allowance included

Stephankie-Dreams



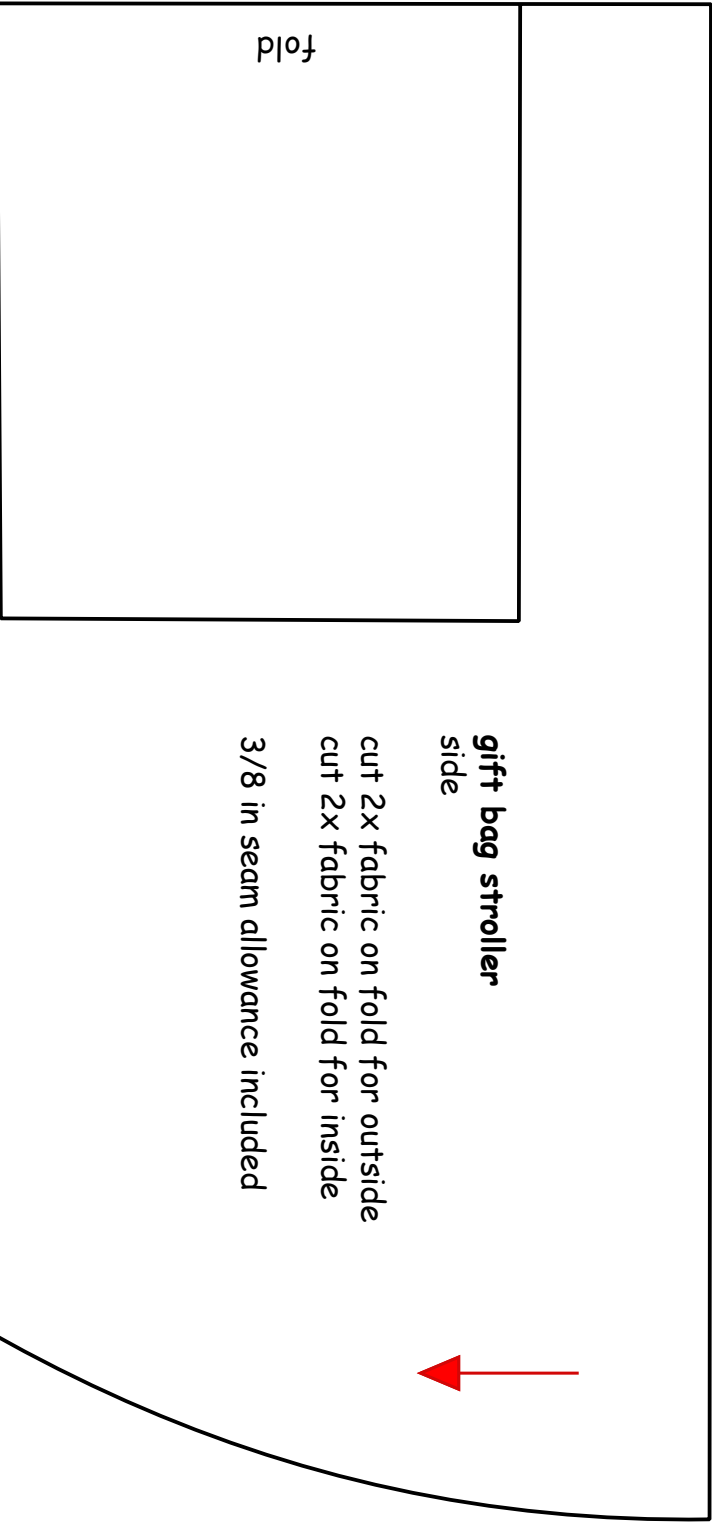
**gift bag stroller
handle**

cut 4x fabric for outside
cut 2x batting 0,39 in large

3/8 in seam allowance included

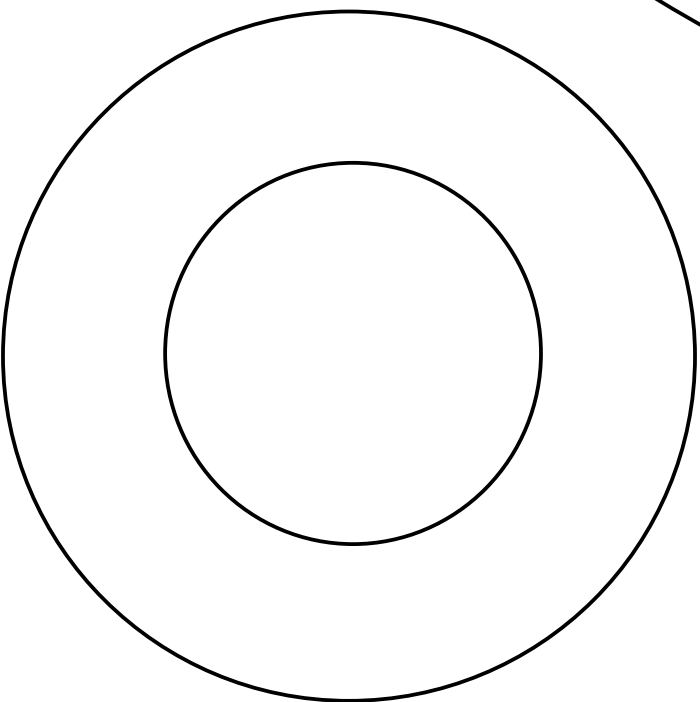


fold



gift bag stroller
side

cut 2x fabric on fold for outside
cut 2x fabric on fold for inside
3/8 in seam allowance included



gift bag stroller
wheel outside

cut 8x fabric
4x decovil light

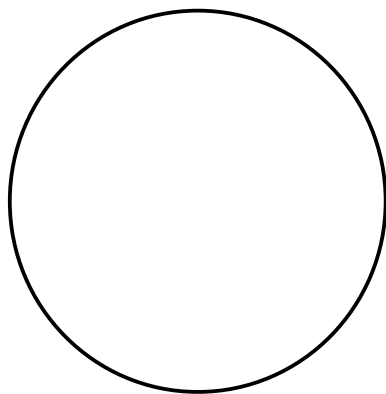
gift bag stroller
side

cut 2x batting iron-on on fold

3/8 in seam allowance included



fold



gift bag stroller
wheel inside

cut 4x fabric
cut 4x fusible interfacing

gift bag stroller
roof

cut 2x batting iron-on,
1x of which opposite

3/8 in seam allowance included



gift bag stroller
roof

cut 2x fabric for outside
cut 2x fabric for inside

3/8 in seam allowance included



Stephankie-Dreams

fold

gift bag stroller
upper border



cut 1x batting iron-on, on fold

3/8 in seam allowance included

Stephankie-Dreams

gift bag stroller
ground for reinforcement
cut 1x plastic or cardboard

Stephankie-Dreams

gift bag stroller

lower border

cut 1x batting iron-on

3/8 in seam allowance included



Stephankie-Dreams